

# catAlarm

## Digital Surveillance System Central Alarm Monitoring Software

### Features:

- Full, prioritised incoming call management
- Differentiated desktops, interactive map
- Optional multiple-monitor interface
- Custom alarm procedures, contacts and operator comments per alarming site
- Alarms archived with recordings and metadata
- User login and audit trails
- Detailed catAlarm gateway reporting
- Escalate alarms to "cases" to commit personnel, establish electronic collaboration, and ensure that incidents are formally resolved

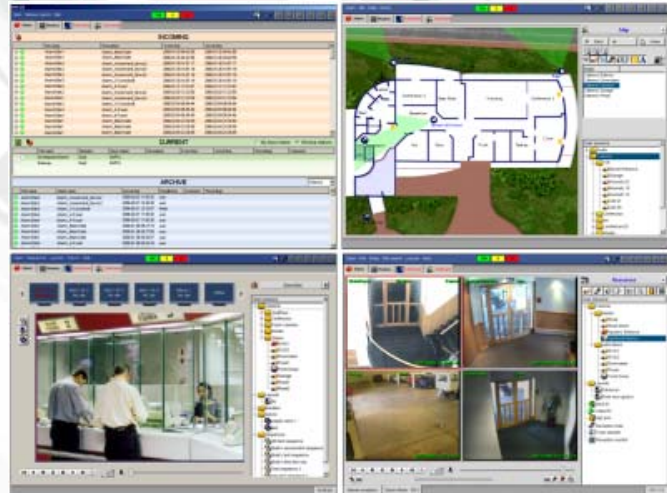
	Site name	Description
	Demonstration	Upstairs Entrance
		Upstairs Entrance
		Upstairs Corridor

Alarms are colour-coded according to priority and grouped by open site connection. Operators double-click to accept alarms, thereby starting the alarm data download and registering their acceptance of the alarm.



[www.cathexis.co.za](http://www.cathexis.co.za)

catAlarm's innovative functions and features have been developed to effectively meet the needs of a *real* central control room that is servicing remote surveillance system clients across multiple continents.



The catAlarm interface employs integrated desktops and panels: Alarm desk (top left), Map desk (top right), Monitors desk (bottom left), Resources desk (bottom right).



Navigate desktops by means of the tab bar, or display the desktops across multiple monitors

### Requirements

- Remote client sites with compatible DSS units
- At least one primary UNIX gateway
- Appropriate base station hardware and communications infrastructure
- catBase DSS Base Station software, or catSite with catMap

### Standard features

- System caters to multiple operators, and is scaleable
- Full prioritised incoming call management and alarm management desktop
- System displays resources seamlessly across networks (catSite software)
- Remote monitoring and control of alarming unit
- Remote site alarm information and maps can be cached at the control room to speed operator responses
- Local SQL database
- User login, custom access to alarms, audit trail, login reports, Archive-Logins table
- Handled alarms are archived with associated recordings, comments and metadata, and may be searched by means of a powerful filter
- Alarm escalation for formal, monitored investigation and resolution

### Optional features

- catBase software for Windows, to run Windows base stations.
- catVGA VGA Server, with the Monitors desktop
- Dual, triple or quad-monitor interface
- Control room hardware and software can be mirrored for backup and hot-replace.



Digital surveillance & beyond

Cathexis Technologies (Pty) Ltd • PO Box 1091 • Umhlanga • 4320 • KwaZulu-Natal • South Africa  
1 Frosterley Crescent • Frosterley Park • La Lucia Ridge Office Park • 4051 • KwaZulu-Natal • South Africa  
Tel: +27 (31) 566 7800 • Fax: +27 (31) 566 2993 • e-mail: [info@cathexis.co.za](mailto:info@cathexis.co.za)



## Specifications

Model		Operating System	
CAT-8000 catAlarm, DSS Central Alarm Monitoring Software		NetBSD 1.6.1 / 2.0 / 3.0 or Windows XP with DirectX 9	
General			
MS Windows	Operator base stations may optionally be run on MS Windows systems (requires CAT-7100 or CAT-6100).		
Information caching	On alarm acceptance, catAlarm first loads available maps, alarm procedures and alarm contacts from the cache, and only fetches this information from the remote site if it has been changed.		
Virtual resources	The system displays the resources seamlessly across an entire network.		
Multiple monitors	Operators may optionally use dual, triple or quad-monitor interfaces, with Alarm, Resources and Map desktops, and other software spread across the monitors.		
Base station media resources	catAlarm user interface provides software controls for local (control room) monitors, speaker and microphone.		
Database	An SQL database stores alarms with their associated recordings and metadata, the site list, cached remote site data, and control room operator audit trails. All operators access the same data.		
Audit trails	Full operator audit trails provide a history of operator alarm responses and actions.		
Alarm Desktop			
Prioritised queue	Alarms are prioritised and colour-coded, and the list may be sorted by priority.	Audio notification	Audio notifications can be assigned to the three statuses of incoming alarms.
Intelligent alarm assignment	The system keeps all logged-in operators informed as to an alarm's status, and who is handling which alarm.	Alarm differentiation by status	Alarms display sequentially in three separate panes: incoming (awaiting handling), current (being handled) and archived (handled).
Multiple open connections	Operators can handle multiple remote alarms simultaneously - a separate interface tab represents each connection.	Alarms archived with meta data	Alarms are archived with their associated information (snapshots, video, activity detection image, operator comments), which can easily be filtered, replayed and reviewed.
Quick commenting	Operators select from a default alarm menu, or type custom comments.	Reports	Detailed template and custom reporting enables alarm service monitoring and improvement
Escalate to case	Operators flag significant alarms for handling by the next level of inspector	Archive data filter	The HISTORY table can be filtered for historical alarm, session, user login or case data.
Resources Desktop			
Fast resize	Camera views can be resized with simple mouse clicks, to display from 1 to 16 live cameras.	Dome panel	A dome camera panel provides an intuitive and sensitive dome joystick, with functions for going to dome presets.
Alarm panels	Alarm panels provide custom information for alarm procedures, alarm contacts and alarm responder comments.	Review controls	VCR-like camera review controls include:  ◀◀ ◀  ▶▶ , speed slider, time search, archive.
Resource control panels	Customisable panel displays hierarchical site resources. Resources can be hidden-and-shown to simplify the panel. Cameras can be dragged to the live camera displays.	Automated alarm responses	Automated system responses to alarms include loading particular layouts of cameras in the Resources desktop, and displaying related alarm recordings.
Map Desktop			
Map setup	The comprehensive map setup includes vector-drawing controls, customisable properties per object, raster image import.	View cameras from map	From the map, operators "send" cameras or dome presets for view in the resources desktop.
Interactive map resources	Camera, PTZ, microphone, speaker, relay, input, serial data stream source (DSS generating the serial data stream for the device at this location)	Control layers and displays	Operators modify the transparency of map layers and map resources, or hide-and-show them to simplify the display.
Monitors Desktop			
Matrix-like functions	Additional matrix-like display and control	Integration	Seamless integration with catSite software
Speed of display	Quick camera display manipulation on VGA monitors, drag-and-drop functions.	Set up resources	Set up camera sequences, screen layouts, and layout sequences (salvos) from the interface

## Ordering Information

Product Code	Description
CAT-8000	catAlarm, DSS Central Alarm Monitoring Software. Note: All software is loaded via an Installation Server.
CAT-7000	(required) catBase, Base Station software (or CAT-6000 catSite with MAP-1000 catMap)
CAT-7100	(optional) catBase, Base Station software for Windows (or CAT-6100 catSite software for Windows)
(catVGA)	CAT-9000 1-Monitor Virtual Matrix (NetBSD)   CAT-9100 1-Monitor Virtual Matrix (Windows) CAT-9104 4-Monitor Virtual Matrix (Windows)